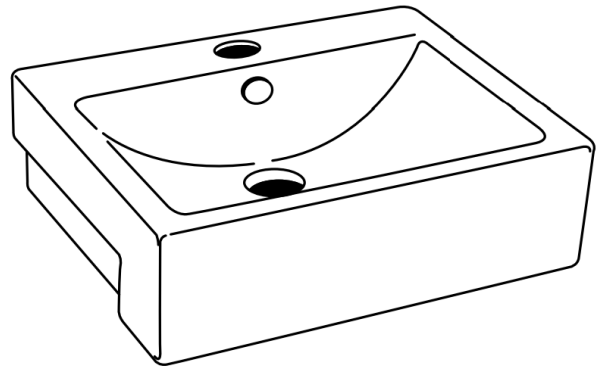
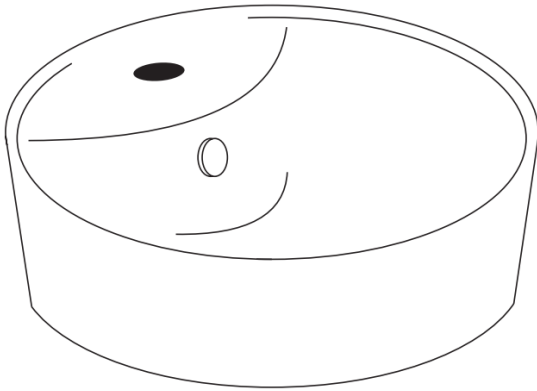
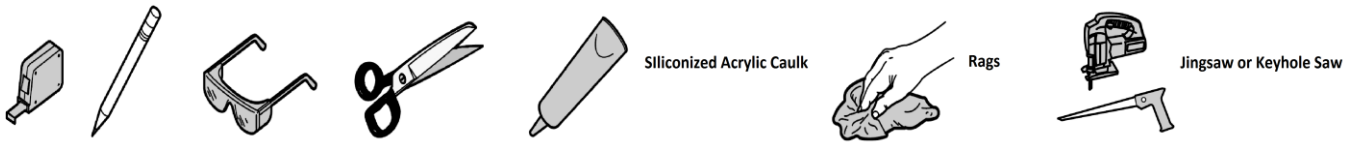


Product Category	Console Basins & Semi-Recessed Basins		
Product Model	HTB-BEVERIA-211	HTB-ERISTA-211	HTB-ELTIS-211
	HTB-BELLA-211	HTB-BARISTA-202	HTB-BEVERLY-202
	HTB-ERICA-202	HTB-ELDONNAY-202	HTB-BAROCK-210
	HTB-EUREKA-210		



Log on to www.haustern.com for
more information on terms and conditions

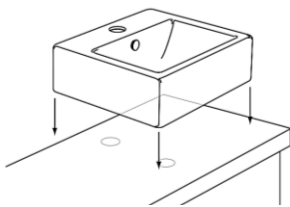
This specification is subject to change without notice. FIAMMA TRADING SDN. BHD. will not be held responsible for the use of superseded or voided specifications. Fabricator must check for cut-out accuracy.



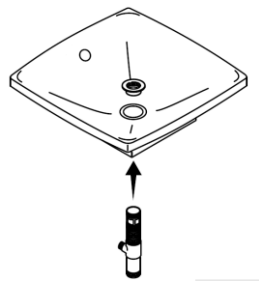
FOREWOOD

- These instructions are only a guide and all Haustern products must be installed by a qualified contractor.
- Ensure that the correct tools are used in each step of these procedures.
- Ensure water is turned off before the installation of the wash basin, and should have been aside of sewage and water supply pipes.
- Prior to installation remove the basin from carton and inspect for transport damage.

1. Use the basin as a guide to mark the bench top for the faucet and waste outlet positions. Cut out the required shape as marked



2. Install the Pop-up waste into the basin.

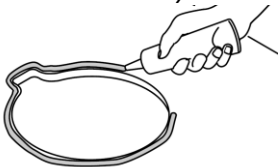


3. **Countertop Faucet** - Install the faucet to the basin, referring to the faucet installation instructions.

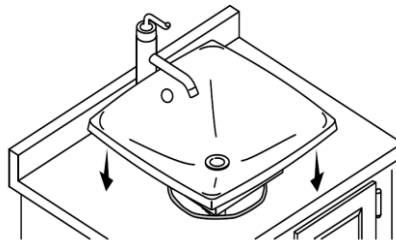
Wall Mounted Faucet - Install the faucet to the basin, referring to the faucet installation instructions. The spout must be at least 5" (127 mm) in length.

4. Use neutral cure, mildew resistant, sanitary grade silicone. Clean away excess silicone from around the basin.

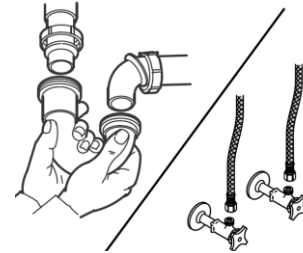
**Use of epoxy two part adhesives will void warranty.*



5. Place the basin in position. Allow the silicone to cure.



6. Complete the water supply and drain connections.



7. Run water into the sink and check for leak.

